



SENIOR UTILITY ENGINEER

\$141,708 - \$166,716

Apply by
July 26, 2026
(First Review, Open Until Filled.)

***P*ROTHMAN**



WHY APPLY?



Ten miles east of downtown Seattle on the shores of Lake Washington, Kirkland pairs big-city vision with a genuine small-town, community feel. The city is an attractive and inviting place to live, work, and visit, and a rewarding place to build a public service career. For an engineer who wants to take ownership of meaningful infrastructure, support long-range utility planning, and help shape the future of a thriving city, Kirkland offers an exceptional opportunity.

Ask City employees why they love where they work and they will point to many of the same things: great colleagues, a supportive work environment, engaged leadership and City Council, and a culture that welcomes innovation. The City also invests in its people through competitive compensation, strong benefits, and training and development opportunities designed to support long-term growth and advancement.

Kirkland's benefits package is unmatched by most other employers and includes 100% City-paid medical, dental, and vision premiums for eligible full-time employees and their dependents. To help address the challenge of reliable childcare, the City maintains agreements with two local childcare providers offering discounted rates for employees at ten locations within 20 miles of Kirkland. Together, these resources reflect a City that values its employees, supports their success, and provides a strong foundation for meaningful, long-term public service as the city's next Senior Utility Engineer.



THE COMMUNITY

The City of Kirkland sits on the northeastern shoreline of Lake Washington, with views across the water to Seattle and out to the Cascade and Olympic mountain ranges. This lakefront community combines a small-town feel, a strong sense of history, and a deep appreciation for quality of life with the amenities of metropolitan living and the natural beauty of the Pacific Northwest. Residents and visitors enjoy award-winning parks, a vibrant downtown waterfront, accredited public safety programs, quality schools, and a healthy, diverse business community.

Incorporated in 1905, Kirkland has grown into a vibrant city of roughly 96,000 residents and ranks among the most compact and walkable suburban cities in Washington State. The city is recognized as a Pacific Northwest gem rich in contemporary culture, with art galleries, fine restaurants, specialty retail, numerous parks, festivals, open-air markets, and year-round community events. The City is home to a range of cultural and business interests, including the nationally recognized Kirkland Performance Center and the northwest headquarters of Google. Other major area employers include EvergreenHealth, the Lake Washington School District, and a growing roster of technology companies, reflecting a local economy that is both stable and dynamic.

The city is served by Interstate 405 and is connected to Seattle and Redmond via State Route 520, with King County Metro and Sound Transit service converging downtown, in Totem Lake, and at South Kirkland. Planned bus rapid transit investments along I-405 will further strengthen regional connections in the years ahead. Outdoor life is woven into the city, with waterfront parks linked by trail, the Cross Kirkland Corridor rail-trail bisecting the city, and nearby Saint Edward and Bridle Trails State Parks all putting recreation within easy reach.

Most of Kirkland is served by the highly regarded Lake Washington School District, with portions in the Bellevue and Northshore districts. The city is also home to Lake Washington Institute of Technology and Northwest University. With its lakefront setting, strong schools, cultural richness, and easy access to the wider Puget Sound region, Kirkland offers an exceptional quality of life for individuals and families alike.

THE CITY

Kirkland operates under the Council-Manager form of government, with a seven-member City Council and a Council-elected Mayor. The City Council sets the policy direction for the City, incorporating public input received directly from citizens and through several Council-appointed boards, commissions, and advisory groups. The Council appoints the City Manager to serve as the City's Chief Executive, providing leadership, direction, and guidance to the organization. The City's management team is comprised of department directors who enjoy cooperative and effective working relationships. City departments include the City Attorney's Office, the City Manager's Office, Finance and Administration, Fire, Human Resources, Information Technology, Municipal Court, Parks and Community Services, Planning and Building, Police, and Public Works.

The City operates with a 2025-2026 biennial budget of \$1.15 billion and a staff of approximately 781 FTEs. Kirkland is a full-service city, providing a wide range of municipal services to residents and businesses. The City enjoys a high degree of public involvement and collaboration, and citizens are active and engaged in Kirkland's civic life.

THE DEPARTMENT

The Public Works Department ensures that Kirkland's infrastructure remains safe, functional, and sustainable. The Department oversees vital services including stormwater management, transportation, water and wastewater systems, maintenance of streets and grounds, and capital improvement projects. As the City's largest department, Public Works plays a central role in making Kirkland livable, sustainable, and connected. Its employees take pride in being trusted stewards of the public's resources, infrastructure, environment, and quality of life. The Department is committed to the City's vision and to its own mission, taking a **One Team** approach, striving for excellence, and working to attract, value, and retain a diverse and talented workforce.



THE POSITION

Kirkland Public Works is seeking a Senior Utility Engineer to support the planning, design, and delivery of critical water and wastewater infrastructure. Reporting to the Deputy Director-Engineering, Planning & Development Services, this new position provides senior technical administration and project management for complex municipal utility engineering projects, including the planning, design, and construction of water and wastewater utility projects for both capital improvements and private development. The Senior Utility Engineer handles complex and highly visible assignments and serves as a technical resource to others. This position is distinct from the Senior Development Engineer and Senior Surface Water Engineer, functioning much like the Senior Project Engineer in the Capital Improvement Program Division.

The City is looking for a highly skilled, dynamic, and solutions-oriented engineer who brings sound judgment, political awareness, and the ability to navigate complex and, at times, sensitive public infrastructure projects. The ideal candidate will demonstrate expertise in project management, engineering design, and construction administration, along with the ability to coordinate across multiple divisions, consultants, and external agencies.

Success in this position requires the ability to balance competing priorities, deliver high-quality outcomes on schedule and within budget, and communicate clearly with leadership, staff, consultants, contractors, public officials, and the public.

The role works in person at Kirkland City Hall and the Public Works Maintenance Center, with a typical Monday through Friday schedule and occasional evening or weekend work as needed. To view the full job description, please see the attachment provided [here](#).

OPPORTUNITIES AND CHALLENGES

Regional Infrastructure Planning and Cascade Water Alliance Coordination: The Senior Utility Engineer will serve as the City's lead technical representative for Cascade Water Alliance's capital and supply planning efforts. This includes attending and actively participating in Cascade board, committee, and technical meetings; reviewing planning documents, engineering designs, cost estimates, and financial impacts; and evaluating implications for Kirkland's water system reliability and long-range capital planning. This position will also help coordinate the integration of regional investments with the City's Water System Plan update and provide technical analysis, recommendations, and staff support to the City's Cascade Board Member and Public Works leadership.

Utility Planning, Modeling, and Consultant Management: The Senior Utility Engineer will lead the development and implementation of the City's water and wastewater planning efforts by managing consultant contracts, scopes of work, schedules, budgets, and deliverables associated with the Water System Plan, General Sewer Plan, hydraulic and hydrologic modeling, utility strategic planning, and related technical studies. Serving as the City's primary technical liaison with engineering consultants, this position will help ensure that planning efforts support regulatory compliance, operational needs, growth projections, and future capital investment decisions.

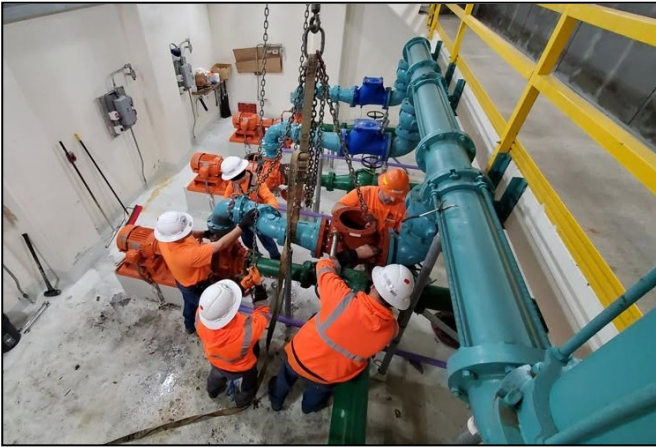


Capital Improvement Program Development and Technical Leadership: The Senior Utility Engineer will lead the annual review, prioritization, and refinement of water and wastewater Capital Improvement Program projects. This includes assisting the CIP Division with developing project concepts, planning-level scopes, cost estimates, and implementation strategies. The position will evaluate system deficiencies and operational needs through engineering analysis and modeling, provide technical review and quality assurance of utility CIP projects throughout planning and design, and coordinate with operations, engineering, finance, and project delivery staff to ensure capital investments align with utility performance goals, regulatory requirements, and long-term infrastructure needs.

Utility Policy, Rates, and Strategic Initiatives: The Senior Utility Engineer will provide technical support for utility rate studies, regulatory compliance initiatives, and strategic utility policy discussions. This work includes evaluating the impacts of regional, state, and federal requirements on utility operations and capital programs, developing technical recommendations for leadership, and supporting utility financial planning through analysis of capital investment needs, asset management priorities, and long-term system sustainability.

THE IDEAL CANDIDATE

The City is seeking a technically strong, collaborative, and forward-thinking utility engineer who enjoys working across departments, supporting long-range infrastructure planning, and translating complex technical information into practical recommendations. The successful candidate will bring strong engineering expertise, sound judgment, clear communication, and a public service mindset.



The ideal candidate will bring the following knowledge, skills, and abilities:

- Knowledge of civil and utility engineering principles and practices.
- Knowledge of modern methods, equipment, drafting techniques, software applications, and materials used in civil engineering projects.
- Knowledge of Supervisory Control and Data Acquisition systems and asset management principles and practices.
- Ability to understand and apply the principles and practices of civil engineering and construction project management as they relate to the planning, design, inspection, and construction of public works projects.
- Skill in the methods and techniques of budget development, management, and control.
- Ability to interpret and apply relevant laws, codes, ordinances, regulations, policies, and procedures.
- Effective written and oral communication skills, with the ability to work knowledgeably and professionally with the public, public officials, department heads and staff, consultants, and contractors.
- Skill in conflict resolution, with the ability to rapidly analyze the technical and legal implications of decisions, working directly with the City Attorney and the Washington Cities Insurance Authority when necessary.
- Positive leadership skills and a record of inter-departmental cooperation through involvement with diverse work groups, community interests, or service teams.
- Ability to work independently and successfully prioritize competing deadlines, schedules, and limited resources among a variety of customers to ensure the timely delivery of programs and projects.

EDUCATION & EXPERIENCE

Minimum Qualifications:

- A bachelor of science in civil engineering or a closely related field.
- Seven (7) years of experience in utility engineering and/or planning, including three (3) years of direct project management experience.

In place of the requirements above, a candidate may possess any equivalent combination of relevant education and experience that demonstrates the knowledge, skill, and ability to proficiently perform the essential duties and responsibilities listed in the full job description.

Licenses and Other Requirements:

- A valid Washington State Driver's license and the ability to remain insurable under the City's insurance to operate motor vehicles.
- A Washington State Professional Engineer license is required, or the ability to obtain through comity within 6 months.
- Three (3) years of experience in utility management in a government setting, including municipal, state, or federal government, is preferred.



COMPENSATION & BENEFITS

➤ \$141,708 - \$166,716 DOQ

➤ This position includes a health insurance benefit package with 100% City-paid premiums for 1.0 FTE positions, including medical, dental, and vision coverage for the employee and dependents. Premiums are prorated for positions of less than 1.0 FTE, with cost shared between the City and the employee. Participation in the Washington State Department of Retirement Systems Public Employees' Retirement System is mandatory for all eligible positions.



To learn more about the
City of Kirkland and the
local community, please visit:

www.kirklandwa.gov

Additional employment benefits include:

- 401(b) Municipal Employees' Benefit Trust with a 6.2% City matching contribution.
- Voluntary 457 Deferred Compensation plan.
- Health Reimbursement Account VEBA dollars with a City contribution, with the amount depending on the employee's elected medical plan.
- Voluntary Flexible Spending Account for healthcare and childcare.
- Employee Assistance Program.
- City-paid life insurance.
- City-paid long-term disability insurance.
- Paid vacation, starting at thirteen (12) days in the first year and prorated for part-time positions if applicable.
- Twelve (12) paid holidays annually, including one floating holiday.
- Paid sick leave accruals, with benefits varying based on applicable bargaining unit.
- Paid management leave for select leadership positions.
- Additional perks include alternative work schedules, free EV charging at Level 2 and Level 3 chargers, a free ORCA card for public transit, access to an onsite fitness center and secure bike storage at City Hall, free employee parking, child-care programs with discounted tuition rates, and wellness and transportation incentives.

For a full review of City benefits and perks, please click [here](#).

The City of Kirkland is an Equal Opportunity Employer. All qualified candidates are strongly encouraged to apply by **July 26, 2026** (first review, open until filled). Applications, resumes, cover letters, and supplemental questions will only be accepted electronically. To **apply online**, go to **www.prothman.com** and click on "**Open Recruitments**", select "**City of Kirkland, WA – Senior Utility Engineer**", and click "**Apply Online**", or click [here](#). Profile photos 3, 5, 6, 7, & 8 provided by Nikola Lakic and Bella Chaffey Real Estate.

PROTHMAN

www.prothman.com

206.368.0050